

COUNTY WICKLOW

RESIDENTIAL ZONED LAND TAX DRAFT MAP

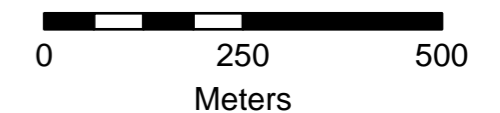
Bray North

Lands in Scope for RZLT

-  Residential
-  Mixed Use

Wicklow County Council makes every effort to ensure the quality of the information available on this map and updates the information regularly. However geographic data by its very nature, regardless of source, are subject to change and may contain inconsistencies, inaccuracies, and/or be dependent upon scale. Before relying on the information on this map, members of the public should carefully evaluate its accuracy, currency, completeness and relevance for their purposes, and should you need to rely on the information provided in this map please obtain separate confirmation from the Forward Planning staff at Wicklow County Council. Wicklow County Council shall have no liability for the data or lack thereof, or any decision made or action taken or not taken in reliance upon any of the data.

Ordnance Survey material is supplied by permission of the Government under licencing agreement. Anyone wishing to reproduce Ordnance Survey Ireland material, or use it as a basis for their own publications, must obtain a licence from Ordnance Survey Ireland for which a fee may be payable.





COUNTY WICKLOW

RESIDENTIAL ZONED LAND TAX DRAFT MAP

Bray South

Lands in Scope for RZLT

-  Residential
-  Mixed Use

Wicklow County Council makes every effort to ensure the quality of the information available on this map and updates the information regularly. However geographic data by its very nature, regardless of source, are subject to change and may contain inconsistencies, inaccuracies, and/or be dependent upon scale. Before relying on the information on this map, members of the public should carefully evaluate its accuracy, currency, completeness and relevance for their purposes, and should you need to rely on the information provided in this map please obtain separate confirmation from the Forward Planning staff at Wicklow County Council. Wicklow County Council shall have no liability for the data or lack thereof, or any decision made or action taken or not taken in reliance upon any of the data.

Ordnance Survey material is supplied by permission of the Government under licencing agreement. Anyone wishing to reproduce Ordnance Survey Ireland material, or use it as a basis for their own publications, must obtain a licence from Ordnance Survey Ireland for which a fee may be payable.





COUNTY WICKLOW

RESIDENTIAL ZONED LAND TAX DRAFT MAP

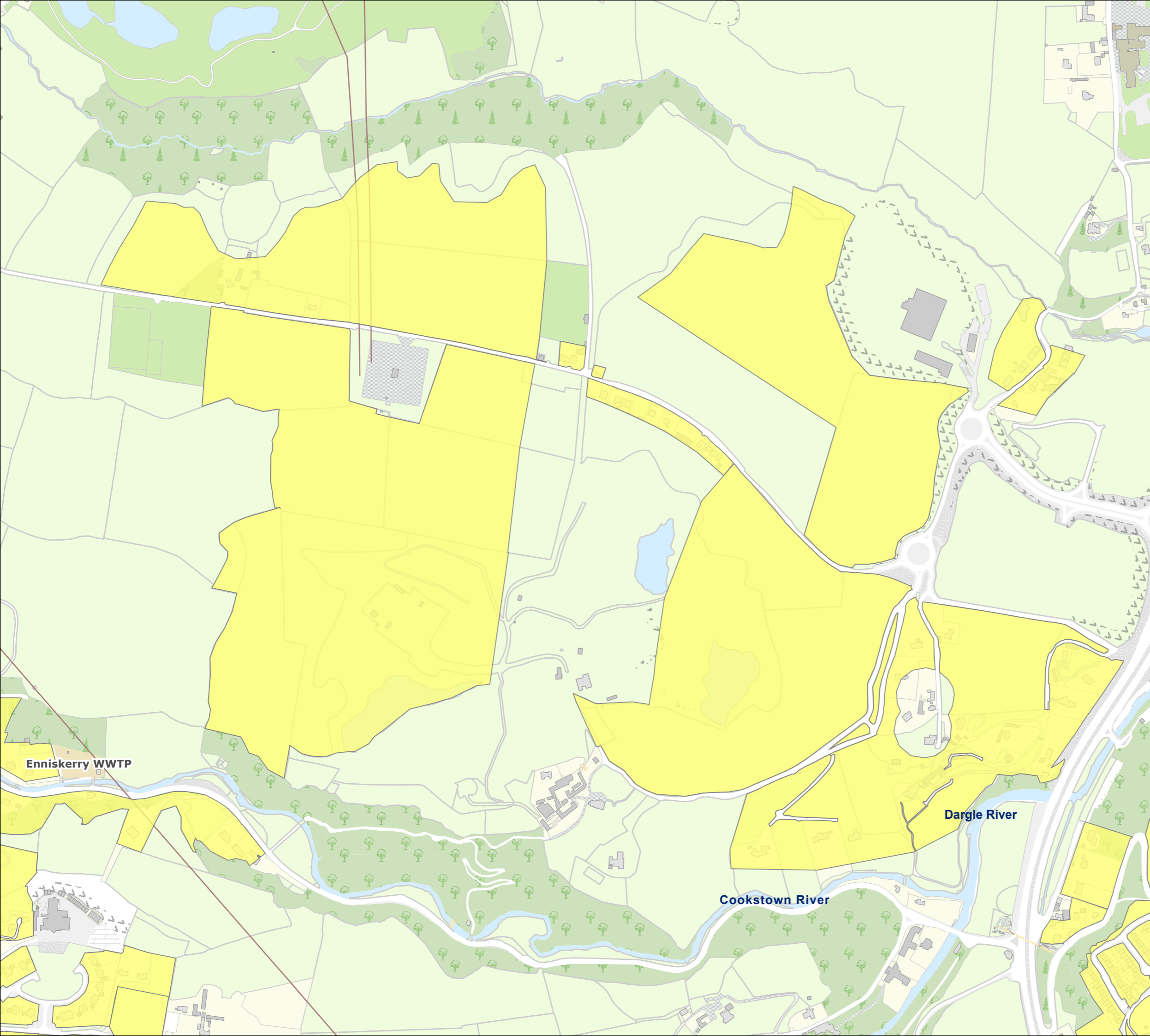
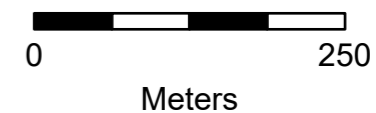
Fassaroe

Lands in Scope for RZLT

-  Residential
-  Mixed Use

Wicklow County Council makes every effort to ensure the quality of the information available on this map and updates the information regularly. However geographic data by its very nature, regardless of source, are subject to change and may contain inconsistencies, inaccuracies, and/or be dependent upon scale. Before relying on the information on this map, members of the public should carefully evaluate its accuracy, currency, completeness and relevance for their purposes, and should you need to rely on the information provided in this map please obtain separate confirmation from the Forward Planning staff at Wicklow County Council. Wicklow County Council shall have no liability for the data or lack thereof, or any decision made or action taken or not taken in reliance upon any of the data.

Ordnance Survey material is supplied by permission of the Government under licencing agreement. Anyone wishing to reproduce Ordnance Survey Ireland material, or use it as a basis for their own publications, must obtain a licence from Ordnance Survey Ireland for which a fee may be payable.





COUNTY WICKLOW

RESIDENTIAL ZONED LAND TAX DRAFT MAP

Enniskerry

Lands in Scope for RZLT

-  Residential
-  Mixed Use

Wicklow County Council makes every effort to ensure the quality of the information available on this map and updates the information regularly. However geographic data by its very nature, regardless of source, are subject to change and may contain inconsistencies, inaccuracies, and/or be dependent upon scale. Before relying on the information on this map, members of the public should carefully evaluate its accuracy, currency, completeness and relevance for their purposes, and should you need to rely on the information provided in this map please obtain separate confirmation from the Forward Planning staff at Wicklow County Council. Wicklow County Council shall have no liability for the data or lack thereof, or any decision made or action taken or not taken in reliance upon any of the data.

Ordnance Survey material is supplied by permission of the Government under licencing agreement. Anyone wishing to reproduce Ordnance Survey Ireland material, or use it as a basis for their own publications, must obtain a licence from Ordnance Survey Ireland for which a fee may be payable.

